

www.snowman.cn

Version Number: C-ST09-CN-V2.0

**雪人集团**  
**SNOWMAN GROUP**



官方微信



营销服务联系方式

福建雪人集团股份有限公司

地址：福建省福州市长乐区航城街道洞江西路8号

电话：+86 (591) 2870 1111

传真：+86 (591) 2870 9222

邮箱：info@snowkey.com

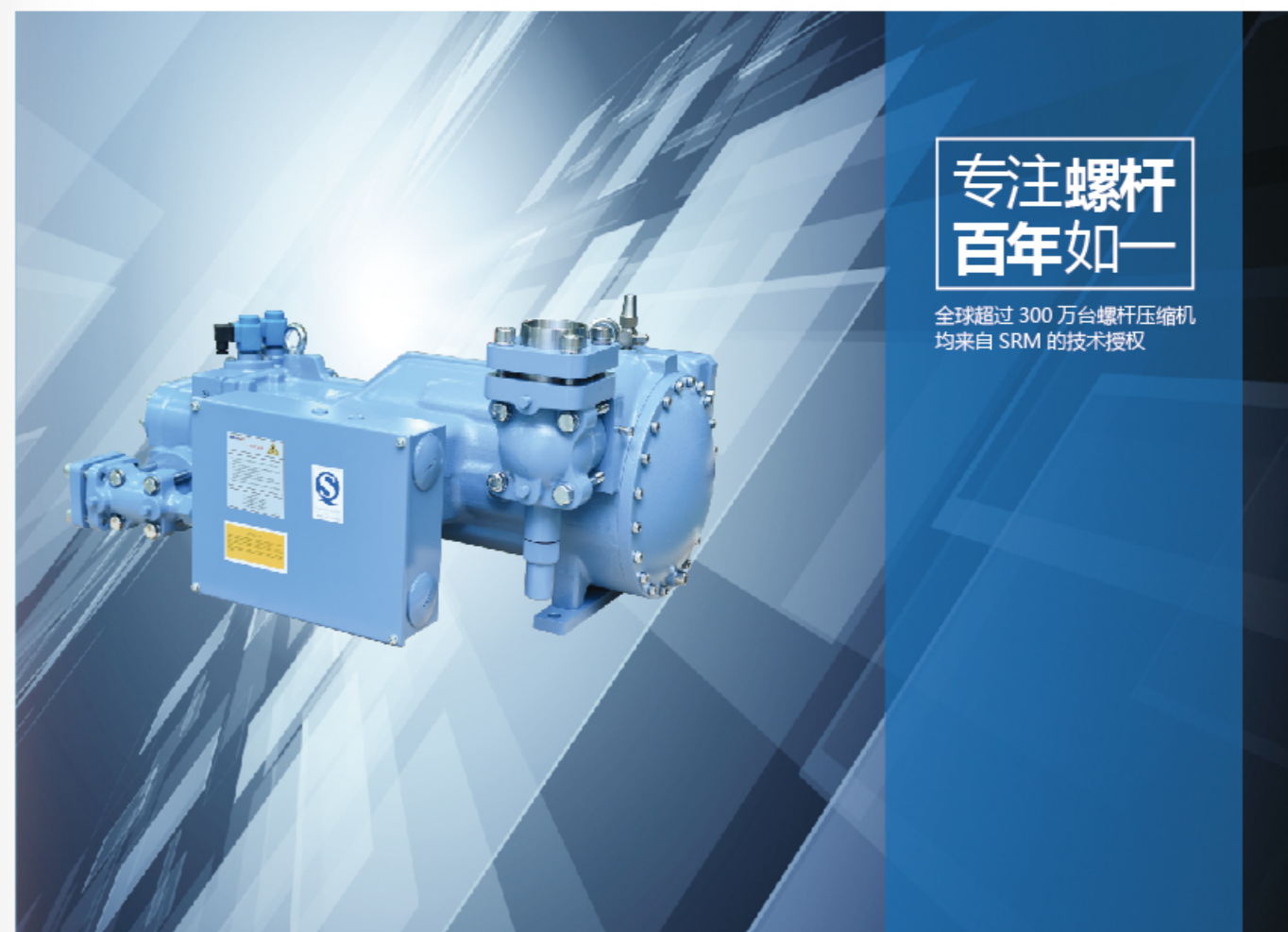
网址：www.snowman.cn

雪人集团保留不预先通知便可自行改变其产品的权利，产品技术参数以订货合同或合同技术附件为准。

**SRMTEC**

## Screw Compressor

SRS系列半封闭单级螺杆压缩机



专注螺杆  
百年如一

全球超过 300 万台螺杆压缩机  
均来自 SRM 的技术授权



全球统一服务热线  
400-109-6660



## 目 录

名 称	页码
SRS系列半封闭高效变频螺杆压缩机结构图 .....	01
型号说明 .....	03
技术数据 .....	04
技术特点 .....	06
供货范围 .....	06
应用范围 .....	07
性能参数 .....	08
外形尺寸图 .....	16

## SRS系列半封闭变频螺杆压缩机结构图

SRS系列半封闭冷冻螺杆压缩机，用于中低温领域，适用于R404A、R507A、R134a、R290、R717等各种常规制冷剂。压缩机可广泛应用于冰蓄冷工程、食品速冻、船舶制冷和低温冷藏等领域。

SRS压缩机共有14种型号，排气量范围85~500m<sup>3</sup>/h@2960rpm，功率范围20HP~150HP@2960rpm。其中SRS-08S/08M/08L/10S/10L/12S/12M/12L型号压缩机为旁通柱塞式能量控制，SRS-14S/14M/14L/16S/16M/16L型号压缩机为滑阀式能量控制。

### 壳体

- 高强度金属铸件，设计压力达2.8MPa；
- 低压降进气流道设计，同时能充分冷却电机；直通气道，减小沿程损失；排气损失小，损耗低；
- 集成油路系统，安装简便，故障率低；
- 整机尺寸小，集过滤器、截止阀、温度传感器和油流量开关等于机身一体，结构紧凑。



### 电机

- 特殊定制材料，实现氨用；
- 搭载永磁同步变频电机，较大地提升制冷容量和应用范围；永磁同步电机功率因数大，损耗小；
- 采用变频控制，根据负荷变化调整转速，提高低负载时电机运行效率；
- 使用制冷剂环流冷却效率高，确保电机长时间稳定运行。



### 转子

- 瑞典SRM第五代“i”型线，5:7齿数比，效率高、运行平稳，有效应用中低温制冷领域；
- 优质锻钢材料加工而成，强度高、耐磨损；
- 加工精度达微米级，啮合紧密，受力均匀，使用寿命长。

### 吸气过滤器



- 内置精密吸气过滤器，有效过滤制冷气体中杂质并保护电机。

### 电机保护

- INT69 SNY保护模块，电机温度过高、逆向以及缺相保护；
- 多个串联的PTC热敏电阻，保证电机正常运行；
- 电机运行状态反馈，且实现实时监控。



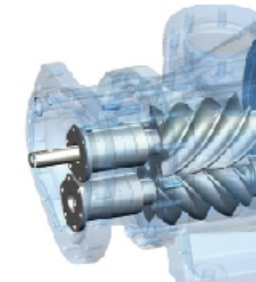
### 能量调节

- 按工况需求，选择无级能量调节或者有级能量调节；
- 控制滑阀介于壳体与转子之间，设计合理、紧凑，密封性能优越。



### 轴承

- 多轴承组合配对，保证生命周期，高载荷、低噪音；
- 高耐磨滚动体及特殊型线滚道，长期正常连续运行。



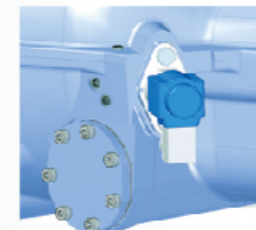
### 截止阀

- 内置排气止回阀，阻力低、有效防止停机时制冷剂回流；
- 截止阀可旋转，安装简单、紧凑和灵活。



### VI (内容积比)

- Vi可调装置，可实现手动大范围调节或自动调节，可提高系统在不同工况下的效率；
- Vi调节与电机的变速控制大幅度提高COP系数（部分负荷工况下，节能效果尤为突出），在变工况下有巨大优势。



## 型号说明

压缩机	SRS	-	16	L	M	A	L
-----	-----	---	----	---	---	---	---

系列	SRS 雪人半封闭螺杆压缩机
----	----------------

螺杆直径	08 Ø80mm
	10 Ø100mm
	12 Ø120mm
	14 Ø140mm
	16 Ø160mm

螺杆长度	L 长
	M 中
	S 短

VI调节方式	A 自动高Vi调节 (适用于SRS-14~16)
	M 手动高Vi调节 (适用于SRS-14~16)
	H 固定高Vi (适用于SRS-08~12)
	S 自动低Vi调节 (适用于SRS-14/16)
	R 手动低Vi调节 (适用于SRS-14/16)
	L 固定低Vi(适用于SRS-08/10/12)

制冷剂	A R717
	F CFCs

电制	L 220V AC 50/60Hz
	M 110V AC 50/60Hz
	Y 24V AC 50/60HZ

## 技术数据

压缩机型号		氟用压缩机							
		08S	08M	08L	10S	10L	12S	12M	12L
电机名义功率	HP/kW	25/18.5	30/22	35/26	40/30	50/37	60/45	70/52	75/55
排气量50/60 Hz	m <sup>3</sup> /h	85/102	100/120	120/144	140/168	168/202	210/252	230/276	250/300
重量	kg	190	200	210	245	250	365	370	375
排气管内径尺寸 Ø	mm/inchs	42	42	42	42	42	54	54	54
		1-5/8"	1-5/8"	1-5/8"	1-5/8"	1-5/8"	2-1/8"	2-1/8"	2-1/8"
吸气管内径尺寸 Ø	mm/inchs	54	54	54	54	54	80	80	80
		2-1/8"	2-1/8"	2-1/8"	2-1/8"	2-1/8"	3-1/8"	3-1/8"	3-1/8"
油路接头	mm/inchs	3/8" SAE				Ø22/M26×1.5			
能量调节		有级: 满载-75%-50%							
保护模块		INT69 SNY							
标准电机		400V/3/50Hz 或 460V/3/60Hz							
部分绕组启动电流 PW/DOL	A	140/215	175/271	200/308	277/398	303/406	262/422	280/459	351/580
星-三角启动电流 Y/DOL	A	71/215	90/271	103/308	133/398	135/406	139/422	159/459	193/580
最大运行电流	A	42	49	59	70	80	105	120	135

压缩机型号		氟用压缩机					
		14S	14M	14L	16S	16M	16L
电机名义功率	HP/kW	90/66	100/75	110/82	125/90	140/105	150/112
排气量50/60 Hz	m <sup>3</sup> /h	310/372	340/408	370/444	420/504	450/540	500/600
重量	kg	505	510	515	680	690	700
排气管内径尺寸 Ø	mm/inchs	67	67	67	80	80	80
		2-5/8"	2-5/8"	2-5/8"	3-1/8"	3-1/8"	3-1/8"
吸气管内径尺寸 Ø	mm/inchs	92	92	92	104.8	104.8	104.8
		3-5/8"	3-5/8"	3-5/8"	4-1/8"	4-1/8"	4-1/8"
油路接头	mm/inchs	Ø22/M26×1.5					
能量调节		有级: 满载-75%-50%-25% 无级: 满载-25% (可按需提供)					
保护模块		INT69SNY					
标准电机		400V/3/50Hz 或 460V/3/60Hz					
部分绕组启动电流 PW/DOL	A	462/693	462/693	635/953	584/876	770/1155	770/1155
星-三角启动电流 Y/DOL	A	224/693	224/693	318/953	276/876	354/1155	354/1155
最大运行电流	A	142	154	170	185	200	220

## 技术数据

压缩机型号		氨用压缩机							
		08S	08M	08L	10S	10L	12S	12M	12L
电机额定功率	kW	22	27	33	45	45	54	62	72
额定频率	Hz	180	180	180	180	180	180	180	180
额定转速	RPM	3600	3600	3600	3600	3600	3600	3600	3600
额定线电压	V	379	378	395	374	374	348	335	307
额定线电流	A	37	45	54	77	77	101	122	151
空载线反电动势	V	330	324	328	310	310	287	274	251
控制器线电压	V	≥400V							
排气量 150/180Hz	m <sup>3</sup> /h	85/102	100/120	120/144	140/168	168/202	210/252	230/276	250/300
重量	kg	190	195	205	240	260	355	360	365
排气管内径尺寸 Ø	mm/inchs	42	42	42	42	42	57	57	57
吸气管内径尺寸 Ø	mm/inchs	57	57	57	57	57	76	76	76
油路接头	mm	Ø10(卡套式)				Ø22/M26×1.5			
能量调节		有级: 满载-75%-50%							
保护模块		INT69 SNY							

压缩机型号		氨用压缩机					
		14S	14M	14L	16S	16M	16L
电机额定功率	kW	90	90	107	134	134	134
额定频率	Hz	180	180	180	180	180	180
额定转速	RPM	3600	3600	3600	3600	3600	3600
额定线电压	V	267	267	291	380	380	380
额定线电流	A	214	214	234	225	225	225
空载线反电动势	V	221	221	236	299	299	299
控制器线电压	V	≥400V					
排气量 150/180Hz	m <sup>3</sup> /h	310/372	340/408	370/444	420/504	450/540	500/600
重量	kg	505	510	515	670	675	680
排气管内径尺寸 Ø	mm/inchs	65	65	65	76	76	76
吸气管内径尺寸 Ø	mm/inchs	89	89	89	108	108	108
油路接头	mm	Ø22/M26×1.5			Ø28/M26×1.5		
能量调节		有级: 满载-75%-50%-25% 无级: 满载-25%					
保护模块		INT69SNY					

## 技术特点

## 结构紧凑, 拆装方便

- 内置油过滤器、吸气过滤器
- 双侧均可安装截止阀并可旋转
- 优越的润滑性能
- 可靠、操作安全

## 稳定可靠、多重保护

- 搭载INT69 SNY保护模块, 电机温度过高、逆向以及缺相保护
- 标配油流量开关, 监控油循环
- 标配PTC温度传感器, 监控排气温度
- 标配油路通断截止阀和传感器, 防止停机时过多的油流入压缩机
- 可选配压差开关, 监控油过滤器前后压差 (仅氟用压缩机可选)

## 效率高的转子

- 瑞典SRM第五代“i”型线, 5:7齿数比, 效率高、运行平稳, 有效应用中低温制冷领域;
- 加工精度达微米级, 啮合紧密, 受力均匀, 使用寿命长, 达到高速运行。

## 供货范围

## 主要部件

标准供货范围包括: 压缩机机体, 氟用电机 (400V/3/50Hz-460V/3/60Hz) 或氨用同步变频电机, 吸气截止阀, 排气截止阀, 内置排气单向阀, 内置安全阀, 能量调节组件, 内埋有6个PTC温度传感器的电机, PTC排气温度传感器, 防护等级为IP54的接线盒, 电子保护模块INT69 SNY, 充氮保护, 橡胶减震垫, 进油接头。

SRS-12~16型号压缩机标准供货还包括: 可更换油过滤器, 油视镜, 油流量开关, 油路通断截止阀, 油路通断传感器。

SRS-14~16型号压缩机标准供货还包括: 手动Vi调节装置。

## 其他附件

以下附件可选: 特殊电制的电机, 带截止阀的经济器接头, 润滑油, 特殊电压电气附件。

SRS-12~16型号压缩机可选供货还包括: 压差开关 (仅氟用压缩机可选)。

SRS-14~16型号压缩机可选供货还包括: 自动Vi调节装置、喷液接头、容量位移传感器。

如需要, 也可以提供各种型号的油分离器和油冷却器 (请咨询雪人集团)。

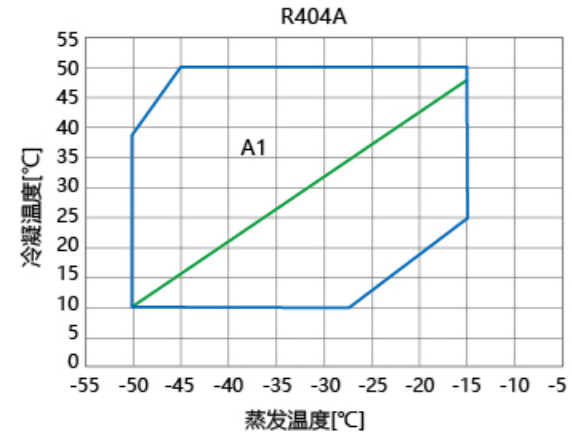
## 噪音低、振动小

## 软件、文档和技术支持

如有其他制冷系统部件的需求, 雪人公司可以直接进行选型:

- 油分离器
- 油冷却器
- 经济器

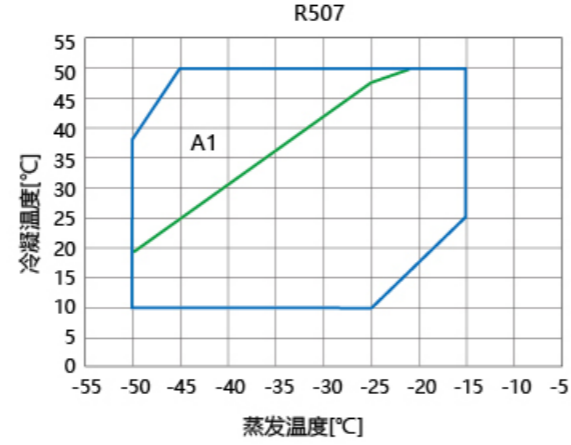
应用范围



50[Hz]供电频率下满负载运行应用范围

吸气过热度10[K]

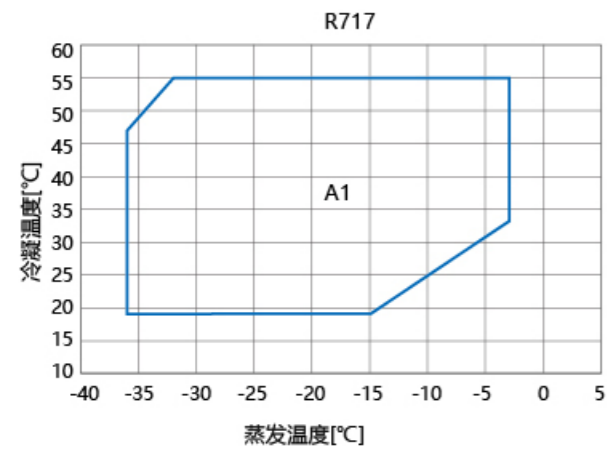
A1: 油冷



50[Hz]供电频率下满负载运行应用范围

吸气过热度10[K]

A1: 油冷



150~210[Hz]变频下满负载运行应用范围

吸气过热度5[K]

A1: 油冷

性能参数

SRS (可带经济器), 制冷剂R404A

SRS-08S(R404A)												
Tc	20		30		35		40		45		50	
Te	Pf	Pa	Pf	Pa	Pf	Pa	Pf	Pa	Pf	Pa	Pf	Pa
-50	11.1	10.7	9	11.4	7.8	12.3	-	-	-	-	-	-
-40	19.6	11.4	16.5	12.6	14.6	13.7	12.6	15.1	10.5	16.6	8.4	18.2
-35	25.4	11.8	21.6	13.1	19.4	14.3	17	15.7	14.5	17.3	11.9	18.8
-30	32.4	12.5	27.8	13.8	25.2	15	22.4	16.4	19.5	18	16.4	19.5
-25	40.8	13.3	35.3	14.6	32.2	15.8	29	17.2	25.5	18.8	22	20.4
-20	50.9	14.4	44.2	15.6	40.5	16.8	36.8	18.2	32.8	19.7	28.8	21.3
-15	-	-	54.5	16.8	50.3	17.9	45.9	19.3	41.5	20.8	36.9	22.4

SRS-08S(R404A)with ECO/带经济器												
Tc	20		30		35		40		45		50	
Te	Pf	Pa	Pf	Pa	Pf	Pa	Pf	Pa	Pf	Pa	Pf	Pa
-50	14.7	12.5	12.6	13.3	11.3	14.5	-	-	-	-	-	-
-40	24.4	12.9	21.6	14.4	19.7	15.7	17.7	17.4	15.4	19.4	13	21.6
-35	30.8	13.3	27.5	14.9	25.4	16.2	22.9	17.9	20.3	19.8	17.4	21.8
-30	38.3	13.8	34.5	15.4	32	16.9	29.2	18.5	26.2	20.3	22.9	22.1
-25	47.1	14.7	42.6	16.2	39.8	17.6	36.6	19.2	33.2	21	29.4	22.7
-20	57.1	15.7	52	17.2	48.8	18.6	45.2	20.1	41.3	21.8	37	23.5
-15	-	-	62.5	18.4	59	19.7	55	21.2	50.7	22.9	46	24.5

SRS-08M(R404A)												
Tc	20		30		35		40		45		50	
Te	Pf	Pa	Pf	Pa	Pf	Pa	Pf	Pa	Pf	Pa	Pf	Pa
-50	12.9	12.8	10.5	14.8	9	16.2	-	-	-	-	-	-
-40	22.7	14.1	19.1	16.8	17	18.5	14.6	20.4	12.2	22.3	9.7	24.1
-35	29.4	14.9	25.1	17.6	22.5	19.4	19.7	21.3	16.8	23.2	13.8	25
-30	37.6	15.9	32.3	18.6	29.2	20.3	26	22.2	22.6	24.1	19.1	25.8
-25	47.4	17.1	41	19.7	37.4	21.4	33.6	23.3	29.6	25.1	25.5	26.9
-20	59	18.6	51.2	21	47	22.7	42.6	24.5	38.1	26.3	33.4	28
-15	-	-	63.2	22.6	58.3	24.1	53.3	25.8	48.1	27.6	42.8	29.2

SRS-08M(R404A)with ECO/带经济器												
Tc	20		30		35		40		45		50	
Te	Pf	Pa	Pf	Pa	Pf	Pa	Pf	Pa	Pf	Pa	Pf	Pa
-50	16.8	14.6	14.5	17	12.9	18.8	-	-	-	-	-	-
-40	27.9	15.8	24.7	18.9	22.6	20.9	20.2	23.2	17.6	25.6	14.8	28.2
-35	35.2	16.5	31.4	19.6	29	21.7	26.2	23.9	23.1	26.2	19.9	28.4
-30	43.8	17.4	39.4	20.5	36.6	22.6	33.4	24.7	29.8	26.9	26.1	28.9
-25	53.7	18.5	48.6	21.6	45.4	23.6	41.8	25.7	37.8	27.8	33.5	29.6
-20	65.2	19.9	59.2	22.8	55.6	24.7	51.6	26.8	47.1	28.8	42.2	30.6
-15	-	-	71.2	24.3	67.1	26	62.7	28	57.8	29.9	52.4	31.7

SRS-08L(R404A)												
Tc	20		30		35		40		45		50	
Te	Pf	Pa	Pf	Pa	Pf	Pa	Pf	Pa	Pf	Pa	Pf	Pa
-50	15.6	15.2	12.7	17.6	10.9	19.4	-	-	-	-	-	-
-40	27.4	16.9	23.1	20	20.5	22.1	17.7	24.4	14.7	26.6	-	-
-35	35.5	17.8	30.2	21	27.1	23.2	23.8	25.5	20.3	27.7	16.7	29.8
-30	45.4	19	39	22.2	35.3	24.3	31.4	26.6	27.2	28.8	23	30.9
-25	57.2	20.5	49.4	23.5	45.1	25.6	40.5	27.8	35.8	30.1	30.8	32.1
-20	71.2	22.3	61.8	25.1	56.8	27.1	51.5	29.3	46	31.4	40.3	33.5
-15	-	-	76.3	27	70.4	28.8	64.3	30.9	58.1	33	51.7	35

SRS-08L(R404A)with ECO/带经济器												
Tc	20		30		35		40		45		50	
Te	Pf	Pa	Pf	Pa	Pf	Pa	Pf	Pa	Pf	Pa	Pf	Pa
-50	19.9	17.2	17.2	20.1	15.4	22.2	-	-	-	-	-	-
-40	33.1	18.6	29.3	22.3	26.8	24.7	24	27.4	20.9	30.3	17.6	33.3
-35	41.6	19.4	37.2	23.1	34.3	25.6	31.1	28.3	27.5	31	23.6	33.6
-30	51.7	20.4	46.6	24.1	43.3	26.6	39.5	29.2	35.4	31.8	30.9	34.2
-25	63.3	21.7	57.4	25.3	53.7	27.7	49.5	30.3	44.8	32.8	39.6	35
-20	76.7	23.4	69.8	26.8	65.6	29	60.9	31.5	55.6	33.9	49.9	36.1
-15	-	-	83.8	28.4	79	30.6	73.9	32.9	68.1	35.3	61.8	37.4

SRS-10S(R404A)												
Tc	20		30		35		40		45		50	
Te	Pf	Pa	Pf	Pa	Pf	Pa	Pf	Pa	Pf	Pa	Pf	Pa
-50	18	16.6	14.7	19.3	12.6	21.1	-	-	-	-	-	-
-40	31.7	18.4	26.7	21.8	23.7	24.1	20.5	26.6	17.1	29.1	13.6	31.5
-35	41.1	19.4	35	23	31.4	25.3	27.6	27.8	23.5	30.2	19.3	32.5
-30	52.5	20.7	45.1	24.2	40.9	26.5	36.3	29	31.5	31.5	26.6	33.7
-25	66.2	22.3	57.2	25.7	52.2	27.9	46.9	30.4	41.4	32.8	35.7	35
-20	82.5	24.3	71.6	27.4	65.7	29.6	59.6	31.9	53.2	34.3	46.7	36.5
-15	-	-	88.3	29.4	81.5	31.4	74.4	33.7	67.2	36	59.8	38.1

SRS-10S(R404A)with ECO/带经济器												
Tc	20		30		35		40		45		50	
Te	Pf	Pa	Pf	Pa	Pf	Pa	Pf	Pa	Pf	Pa	Pf	Pa
-50	23.9	19.4	20.8	22.8	18.7	25.3	-	-	-	-	-	-
-40	39.6	21	35.3	25.1	32.4	27.9	29.1	31.1	25.4	34.4	21.5	38
-35	49.8	21.8	44.8	26.1	41.4	28.9	37.6	32	33.4	35.1	28.9	38.2
-30	61.8	22.9	56	27.2	52.1	29.9	47.8	32.9	42.9	35.9	37.7	38.7
-25	75.7	24.4	68.9	28.5	64.6	31.2	59.7	34.1	54.3	36.9	48.3	39.5
-20	91.6	26.2	83.7	30	78.9	32.6	73.5	35.4	67.4	38.2	60.7	40.7
-15	-	-	100.4	31.9	95.1	34.3	89.1	37	82.4	39.6	75	42

性能参数

SRS (可带经济器), 制冷剂R404A

SRS-10L(R404A)												
Tc	20		30		35		40		45		50	
Te	Pf	Pa	Pf	Pa	Pf	Pa	Pf	Pa	Pf	Pa	Pf	Pa
-50	21.1	19.3	17.1	22.3	14.8	24.5	-	-	-	-	-	-
-40	37.1	21.3	31.2	25.3	27.7	27.9	23.9	30.8	19.9	33.6	15.9	36.4
-35	48	22.5	40.9	26.6	36.7	29.3	32.2	32.1	27.4	35	22.6	37.7
-30	61.3	24	52.7	28	47.7	30.7	42.4	33.6	36.8	36.4	31.1	39
-25	77.3	25.8	66.9	29.7	61	32.3	54.8	35.1	48.4	38	41.7	40.5
-20	96.3	28.1	83.6	31.7	76.8	34.2	69.6	36.9	62.2	39.7	54.6	42.2
-15	-	-	103.2	34	95.2	36.4	87	39	78.5	41.6	69.9	44.1

SRS-10L(R404A)with ECO/带经济器												
Tc	20		30		35		40		45		50	
Te	Pf	Pa	Pf	Pa	Pf	Pa	Pf	Pa	Pf	Pa	Pf	Pa
-50	27.6	22.2	24	26.1	21.5	28.9	-	-	-	-	-	-
-40	45.5	23.9	40.6	28.7	37.2	31.9	33.4	35.5	29.2	39.3	24.8	43.4
-35	57.2	24.8	51.4	29.7	47.6	33	43.2	36.5	38.3	40	33.1	43.6
-30	70.8	26	64.2	30.9	59.9	34.1	54.9	37.6	49.3	40.9	43.3	44.2
-25	86.6	27.7	79	32.4	74.1	35.5	68.4	38.8	62.2	42.1	55.4	45.2
-20	104.7	29.7	95.8	34.2	90.3	37.1	84.1	40.4	77.2	43.6	69.6	46.4
-15	-	-	114.7	36.2	108.6	39	101.8	42.1	94.3	45.2	85.8	48

SRS-12S(R404A)												
Tc	20		30		35		40		45		50	
Te	Pf	Pa	Pf	Pa	Pf	Pa	Pf	Pa	Pf	Pa	Pf	Pa
-50	25.2	23.5	20.5	27.2	17.6	29.8	-	-	-	-	-	-
-40	44.3	26	37.3	30.8	33.1	34	28.6	37.5	23.8	41	18.9	44.4
-35	57.4	27.4	48.9	32.4	43.9	35.7	38.5	39.2	32.8	42.7	27	45.9
-30	73.3	29.2	63	34.1	57	37.4	50.7	40.9	44	44.4	37.2	47.5
-25	92.4	31.5	79.9	36.2	72.9	39.4	65.5	42.8	57.8	46.3	49.8	49.4
-20	115.1	34.3	99.9	38.6	91.8	41.7	83.2	45	74.3	48.4	65.2	51.5
-15	-	-	123.3	41.5	113.8	44.3	103.9	47.5	93.9	50.7	83.5	53.8

SRS-12S(R404A)with ECO/带经济器												
Tc	20		30		35		40		45		50	
Te	Pf	Pa	Pf	Pa	Pf	Pa	Pf	Pa	Pf	Pa	Pf	Pa
-50	34.1	28.2	30	33.4	27.1	37.3	-	-	-	-	-	-
-40	56.1	30	50.5	36.4	46.6	40.7	42.1	45.5	37	50.7	31.6	56.6
-35	70.2	31.1	63.8	37.6	59.4	41.9	54.2	46.5	48.5	51.3	42.2	56.2
-30	86.8	32.5	79.4	38.9	74.4	43.1	68.6	47.6	62.1	52.2	55	56.6
-25	105.9	34.4	97.4	40.6	91.8	44.7	85.4	49.1	78.1	53.5	70	57.5
-20	127.7	36.8	117.8	42.7	111.6	46.5	104.5	50.8	96.5	55	87.7	58.9
-15	-	-	140.7	45.1	133.8	48.7	126.1	52.8	117.5	56.8	107.7	60.5

SRS-12M(R404A)												
Tc	20		30		35		40		45		50	
Te	Pf	Pa	Pf	Pa	Pf	Pa	Pf	Pa	Pf	Pa	Pf	Pa
-50	27.9	25.5	22.7	29.5	19.5	32.4	-	-	-	-	-	-
-40	49.1	28.2	41.3	33.5	36.7	36.9	31.6	40.7	26.4	44.5	21	48.2
-35	63.6	29.8	54.2	35.2	48.6	38.7	42.6	42.5	36.4	46.3	29.9	49.8
-30	81.2	31.7	69.8	37.1	63.2	40.6	56.2	44.4	48.8	48.2	41.2	51.6
-25	102.4	34.2	88.5	39.3	80.8	42.8	72.6	46.5	64	50.2	55.2	53.6
-20	127.6	37.2	110.7	42	101.7	45.3	92.2	48.9	82.4	52.5	72.2	55.9
-15	-	-	136.7	45	126.1	48.1	115.2	51.6	104	55.1	92.5	58.4

SRS-12M(R404A)with ECO/带经济器												
Tc	20		30		35		40		45		50	
Te	Pf	Pa	Pf	Pa	Pf	Pa	Pf	Pa	Pf	Pa	Pf	Pa
-50	37.1	29.9	32.3	35.1	29	39	-	-	-	-	-	-
-40	61.4	32.2	54.7	38.6	50.2	43	45.1	47.8	39.5	53	33.5	58.6
-35	77.1	33.4	69.5	40.1	64.3	44.4	58.4	49.1	51.9	54	44.9	58.8
-30	95.6	35.1	86.8	41.7	80.9	46	74.1	50.5	66.8	55.2	58.6	59.5
-25	117	37.3	106.7	43.6	100.2	47.8	92.6	52.3	84.2	56.7	75	60.7
-20	141.7	40	129.6	46	122.3	50	113.9	54.3	104.5	58.6	94.3	62.5
-15	-	-	155.4	48.8	147.1	52.6	137.9	56.7	127.8	60.8	116.4	64.5

SRS-12L(R404A)												
Tc	20		30		35		40		45		50	
Te	Pf	Pa	Pf	Pa	Pf	Pa	Pf	Pa	Pf	Pa	Pf	Pa
-50	30.9	28	25.2	32.4	21.7	35.5	29.2	48.8	-	-	-	-
-40	54.4	34.4	45.8	36.7	40.6	40.6	35.1	44.7	29.2	48.8	23.3	52.9
-35	70.5	32.7	60	38.6	53.9	42.5	47.2	46.7	40.3	50.8	33.1	54.7
-30	90	34.8	77.3	40.7	70	44.6	62.2	48.7	54.1	52.9	45.6	56.6
-25	113.5	37.5	98.1	43.1	89.5	46.9	80.5	51	71	55.1	61.2	58.9
-20	141.4	40.9	122.7	46	112.7	49.7	102.2	53.7	91.3	57.7	80	61.4
-15	-	-	151.4	49.4	139.7	52.8	127.6	56.6	115.2	60.5	102.6	64.1

SRS-12L(R404A)with ECO/带经济器												
Tc	20		30		35		40		45		50	
Te	Pf	Pa	Pf	Pa	Pf	Pa	Pf	Pa	Pf	Pa	Pf	Pa
-50	40.7	32.4	35.4	38.1	31.8	42.4	-	-	-	-	-	-
-40	67.3	34.9	60	41.9	55.1	46.7	49.4	51.9	43.3	57.5	36.7	63.6
-35	84.5	36.2	76.1	43.5	70.4	48.2	64	53.4	56.8	58.6	49.1	63.8
-30	104.7	38.1	95	45.3	88.5	49.9	81.2	54.9	73	59.9	64.1	64.6
-25	128.1	40.4	116.8	47.3	109.6	51.9	101.4	56.8	92.2	61.6	82.1	66
-20	154.8	43.4	141.7	49.9	133.6	54.3	124.5	59	114.3	63.7	103.1	67.9
-15	-	-	169.7	52.9	160.7	57	150.7	61.5	139.5	66	127.2	70.1

SRS (可带经济器), 制冷剂R404A

SRS-14S(R404A)												
Tc	20		30		35		40		45		50	
Te	Pf	Pa	Pf	Pa	Pf	Pa	Pf	Pa	Pf	Pa	Pf	Pa
-50	39.3	35.6	32	41.2	27.5	45.2	-	-	-	-	-	-
-40	69.2	39.4	58.2	46.7	51.6	51.6	44.6	56.8	37.2	62.1	29.6	67.3
-35	89.6	41.6	76.3	49.1	68.5	54.1	60	59.4	51.2	64.7	42.1	69.6
-30	114.4	44.3	98.3	51.7	89	56.7	79.1	62	68.7	67.3	58	72.1
-25	144.3	47.7	124.7	54.9	113.8	59.7	102.3	64.9	90.2	70.1	77.8	74.9
-20	179.7	52	156	58.6	143.2	63.2	129.9	68.3	116	73.4	101.8	78.1
-15	-	-	192.5	62.9	177.6	67.2	162.2	72	146.5	76.9	130.4	81.6

SRS-08S(R404A)with ECO/带经济器												
Tc	20		30		35		40		45		50	
Te	Pf	Pa	Pf	Pa	Pf	Pa	Pf	Pa	Pf	Pa	Pf	Pa
-50	49.8	39.7	42.6	46.2	38.1	51.1	-	-	-	-	-	-
-40	82.9	43.1	72.9	51.4	66.5	56.9	59.3	63	51.3	69.3	43.1	76
-35	104.6	45.1	92.9	53.5	85.4	59.1	77	65.1	67.7	71.1	58	77
-30	130.1	47.5	116.6	56	107.9	61.5	98.2	67.4	87.7	73.3	76.1	78.6
-25	160	50.7	144.2	58.9	134.3	64.3	123.3	70	111.3	75.7	98.1	80.9
-20	194.3	54.7	175.9	62.4	164.7	67.5	152.3	73.1	138.8	78.6	123.9	83.6
-15	-	-	211.7	66.4	199.3	71.3	185.5	76.6	170.4	81.9	153.9	86.7

SRS-14M(R404A)												
Tc	20		30		35		40		45		50	
Te	Pf	Pa	Pf	Pa	Pf	Pa	Pf	Pa	Pf	Pa	Pf	Pa
-50	49.1	44.5	41.1	52.9	36.3	59.6	-	-	-	-	-	-
-40	81.1	46.2	69.6	55.9	63	62.9	55.9	71.3	48.6	81.2	41.1</	

性能参数

SRS (可带经济器), 制冷剂R404A

SRS-16M(R404A)												
Tc	20		30		35		40		45		50	
Te	Pf	Pa	Pf	Pa	Pf	Pa	Pf	Pa	Pf	Pa	Pf	Pa
-50	57.9	49.5	47.1	57.3	40.6	62.9	-	-	-	-	-	-
-40	101.7	54.8	85.6	64.9	75.1	75.1	65.6	78.9	54.6	86.3	43.5	93.4
-35	131.7	57.7	112.2	68.2	130.9	75.1	88.3	82.4	75.3	89.8	61.9	96.6
-30	168.3	61.5	144.5	71.9	130.9	78.7	116.4	86.1	101.1	93.4	85.3	100.1
-25	208.7	65.2	183.4	76.2	167.4	82.9	150.4	90.2	132.7	97.4	114.4	104
-20	256.5	70.1	229.4	81.4	210.6	87.8	191	94.8	170.6	101.9	149.7	108.4
-15	-	-	280.9	86.7	261.1	93.3	238.6	100	215.5	106.9	173.7	113.3

SRS-16M(R404A)with ECO/带经济器												
Tc	20		30		35		40		45		50	
Te	Pf	Pa	Pf	Pa	Pf	Pa	Pf	Pa	Pf	Pa	Pf	Pa
-50	69.2	52.9	58.6	61.4	51.9	67.6						
-40	115.8	57.8	100.9	68.7	91.3	75.9	80.7	83.8	69.3	91.9	57.5	100.2
-35	146.6	60.5	129.1	71.7	117.9	79.1	105.5	87	92.1	94.9	77.9	102.3
-30	182.9	64	162.5	75.2	149.6	82.5	135.3	90.3	119.7	98	102.9	105
-25	222.2	67.5	201.5	79.3	186.9	86.5	170.5	94.1	152.6	101.7	133.4	108.5
-20	266.9	72	246.5	84.2	229.9	91.1	211.5	96.5	191.3	105.9	169.5	112.6
-15	-	-	295.6	89.2	278.7	96.3	258.2	103.4	236.1	110.6	212	117.2

SRS-16L(R404A)												
Tc	20		30		35		40		45		50	
Te	Pf	Pa	Pf	Pa	Pf	Pa	Pf	Pa	Pf	Pa	Pf	Pa
-50	65.6	55.1	53.4	63.8	46	70	-	-	-	-	-	-
-40	115.2	60.9	96.9	72.2	86	79.7	74.2	87.8	61.9	95.9	49.2	103.8
-35	149.1	64.2	127	75.8	113.9	83.5	99.9	91.7	85.2	99.8	70.1	107.4
-30	187.3	67.2	163.6	79.9	148.2	87.6	131.7	95.7	114.4	103.8	96.6	111.2
-25	232.1	71.2	207.4	84.7	189.5	92.2	170.3	100.3	150.2	108.3	129.5	115.6
-20	285.3	76.6	255.5	89	238.4	97.6	216.2	105.4	193.1	113.3	169.5	120.6
-15	-	-	312.4	94.7	294	103.2	270.1	111.2	243.9	118.8	217.1	126

SRS-12S(R404A)with ECO/带经济器												
Tc	20		30		35		40		45		50	
Te	Pf	Pa	Pf	Pa	Pf	Pa	Pf	Pa	Pf	Pa	Pf	Pa
-50	76	57.9	63.7	67	56.1	73.7	-	-	-	-	-	-
-40	128.5	63.5	110.8	75.3	99.8	83.1	87.6	91.6	74.7	100.3	61.3	108.8
-35	163.4	66.7	142.3	78.8	129.5	86.8	115	95.3	99.7	103.8	83.7	111.7
-30	201.6	69.6	180.2	82.8	165.1	90.8	148.4	99.2	130.4	107.5	111.6	115.2
-25	245.9	73.5	224.4	87.5	207.1	95.3	188.1	103.6	167.3	111.8	145.3	119.2
-20	296.8	78.6	272.2	91.8	256.1	100.6	234.3	108.6	210.9	116.6	185.9	124
-15	-	-	327.1	97.3	310.9	106.1	287.7	114.3	261.7	122.1	233.4	129.2

图例  
 Pf=冷量 (KW)      Pa=输入电功率 (KW)  
 Te=蒸发温度 (°C)      Tc=冷凝温度 (°C)  
 50Hz 频率  
 转速2960rpm  
 过冷度5°C  
 吸气过热度10°C

此工况范围内不需要油冷却

此工况范围内需要油冷却 (具体参看“应用范围”章节)

SRS (可带经济器), 制冷剂R717

SRS-08S(R717)										
Tc	20		30		40		45		50	
Te	Pf	Pa	Pf	Pa	Pf	Pa	Pf	Pa	Pf	Pa
-35	19.4	11.6	17.4	14.2	14.5	15.7	12.6	15.6	-	-
-30	25.2	12.2	22.9	14.8	19.9	16.6	17.9	16.9	15.5	16.5
-25	32.4	13	29.7	15.6	26.6	17.6	24.6	18.2	22.2	18.4
-20	41.4	13.8	38	16.4	34.8	18.7	32.9	19.5	30.6	20.1
-15	52.3	14.7	47.9	17.2	44.6	19.7	42.9	20.8	40.8	21.7
-10	-	-	59.5	18.2	56.1	20.8	54.5	22.1	52.8	23.3
-5	-	-	72.8	19.3	69	21.9	67.8	23.3	66.6	24.8

SRS-08S(R717)with ECO/带经济器										
Tc	20		30		40		45		50	
Te	Pf	Pa	Pf	Pa	Pf	Pa	Pf	Pa	Pf	Pa
-35	22.4	12.9	20.9	16.3	18.1	18.6	16.1	18.8	-	-
-30	28.6	13.4	26.9	16.8	24.3	19.4	22.4	20.1	19.7	20
-25	36.2	14	34.3	17.4	32	20.3	30.2	21.3	27.8	21.8
-20	45.3	14.7	43.1	18	41.1	21.1	39.6	22.5	37.6	23.5
-15	56.3	15.4	53.4	18.7	51.7	22	50.7	23.6	49.2	25
-10	-	-	65.2	19.4	63.8	22.8	63.4	24.6	62.6	26.4
-5	-	-	78.4	20.2	77.1	23.7	77.3	25.6	-	-

SRS-08M(R717)										
Tc	20		30		40		45		50	
Te	Pf	Pa	Pf	Pa	Pf	Pa	Pf	Pa	Pf	Pa
-35	22.5	13.3	20.2	16.2	16.9	17.9	14.6	17.8	-	-
-30	29.2	14.1	26.5	17	23.1	19.1	20.8	19.4	17.9	19
-25	37.6	14.9	34.4	17.9	30.8	20.3	28.5	21	25.7	21.1
-20	48	15.8	44	18.8	40.4	21.5	38.2	22.5	35.5	23.1
-15	60.7	16.9	55.5	19.8	51.8	22.7	49.7	24	47.3	25
-10	-	-	69	20.9	65	23.9	63.3	25.4	61.3	26.8
-5	-	-	84.5	22.2	80.1	25.2	78.6	26.9	77.2	28.6

SRS-08M(R717)with ECO/带经济器										
Tc	20		30		40		45		50	
Te	Pf	Pa	Pf	Pa	Pf	Pa	Pf	Pa	Pf	Pa
-35	25.7	14.5	23.9	18.3	20.8	20.9	18.4	21.1	-	-
-30	32.7	15.2	30.9	18.9	27.9	21.8	25.6	22.5	22.6	22.4
-25	41.4	15.8	39.3	19.6	36.6	22.8	34.6	24	31.8	24.5
-20	51.9	16.5	49.3	20.2	47	23.8	45.4	25.3	43	26.3
-15	64.4	17.4	61.1	21	59.2	24.7	58	26.5	56.3	28
-10	-	-	74.6	21.9	72.9	25.7	72.5	27.7	71.5	29.6
-5	-	-	89.7	22.8	88.2	26.7	88.3	28.8	88.4	31.1

SRS-08L(R717)										
Tc	20		30		40		45		50	
Te	Pf	Pa	Pf	Pa	Pf	Pa	Pf	Pa	Pf	Pa
-35	27.2	15.9	24.4	19.4	20.4	21.4	17.7	21.3	-	-
-30	35.3	16.8	32	20.3	27.8	22.8	25	23.2	21.6	22.6
-25	45.4	17.8	41.5	21.4	37.2	24.2	34.4	25	31	25.2
-20	57.9	18.9	53.1	22.5	48.7	25.7	46.1	26.9	42.8	27.6
-15	73.3	20.2	67	23.7	62.5	27.2	60	28.7	57.1	29.9
-10	-	-	83.3	25.1	78.5	28.7	76.4	30.4	73.9	32.1
-5	-	-	102	26.5	96.6	30.2	94.9	32.2	93.2	34.2

SRS-08L(R717)with ECO/带经济器										
Tc	20		30		40		45		50	
Te	Pf	Pa	Pf	Pa	Pf	Pa	Pf	Pa	Pf	Pa
-35	30.5	16.9	28.4	21.3	24.7	24.2	21.8	24.3	-	-
-30	38.8	17.6	36.5	21.9	33.1	25.3	30.4	26.1	26.8	25.9
-25	49	18.5	46.5	22.7	43.3	26.4	40.9	27.7	37.7	28.3
-20	61.3	19.3	58.3	23.5	55.6	27.6	53.6	29.3	50.9	30.6
-15	76	20.3	72.2	24.5	69.9	28.7	68.5	30.8	66.4	32.5
-10	-	-	87.9	25.5	85.9	29.8	85.3	32.1	84.3	34.4
-5	-	-	105.5	26.7	103.6	31	103.8	33.4	103.9	36

SRS-10S(R717)										
Tc	20		30		40		45		50	
Te	Pf	Pa	Pf	Pa	Pf	Pa	Pf	Pa	Pf	Pa
-35	32.8	19.3	29.2	20.4	23.9	23.5	20.6	26.9	-	-
-30	43.3	20.1	39.3	21.9	33.4	25.3	29.8	28.4	25.6	34.1
-25	55.9	21.3	51.4	23.9	45.1	27.7	41.1	30.7	36.5	35.5
-20	70.8	22.8	65.8	26.1	59	30.3	54.8	33.3	49.8	37.7
-15	88.4	24.4	82.8	28.4	75.5	33	71.1	36	65.9	39.9
-10	-	-	102.7	30.8	95	35.6	90.4	38.4	85	42
-5	-	-	126.1	33.7	117.8	37.8	113.1	40.4	107.7	43.5

||
||
||

性能参数

SRS (可带经济器), 制冷剂R717

SRS-10L(R717)										
Tc	20		30		40		45		50	
Te	Pf	Pa	Pf	Pa	Pf	Pa	Pf	Pa	Pf	Pa
-35	38	21.9	33.8	23.2	27.6	26.6	23.8	30.3	-	-
-30	50.1	22.8	45.5	24.9	38.7	28.7	34.5	32.2	29.6	38.3
-25	64.7	24.2	59.5	27.2	52.2	31.5	47.5	34.8	42.2	40.2
-20	82	25.9	76.2	29.7	68.3	34.5	63.4	37.9	57.7	42.7
-15	102.4	27.8	95.8	32.4	87.4	37.6	82.2	40.9	76.3	45.4
-10	-	-	118.8	35	109.9	40.5	104.6	43.8	98.4	47.8
-5	-	-	145.9	37.4	136.3	43.1	130.9	46.1	124.7	49.6

SRS-10L(R717)with ECO/带经济器										
Tc	20		30		40		45		50	
Te	Pf	Pa	Pf	Pa	Pf	Pa	Pf	Pa	Pf	Pa
-35	42.6	23.4	39.3	25.4	33.6	30.1	29.5	34.8	-	-
-30	55.2	24	51.9	26.9	46	32	41.9	36.3	36.7	43.9
-25	69.9	25.1	66.7	28.9	60.8	34.4	56.5	38.6	51.3	45.2
-20	86.9	26.5	83.8	31.1	78.1	37.1	73.8	41.3	68.6	47.2
-15	106.4	28	103.2	33.4	97.9	39.8	94	44	88.8	49.4
-10	-	-	125.5	35.7	120.7	42.3	117	46.3	112.4	51.2
-5	-	-	151	37.7	146.5	44.3	143.4	48	139.4	52.4

SRS-12S(R717)										
Tc	20		30		40		45		50	
Te	Pf	Pa	Pf	Pa	Pf	Pa	Pf	Pa	Pf	Pa
-35	46.4	26.2	41.3	27.8	33.9	31.9	29.2	36.2	-	-
-30	61.2	27.4	55.5	30	47.4	34.5	42.2	38.6	36.3	45.8
-25	79	29.1	72.7	32.6	63.8	37.8	58.2	41.8	51.7	48.1
-20	100	31.1	93	35.7	83.5	41.4	77.5	45.5	70.6	51.3
-15	124.9	33.3	116.9	38.9	106.8	45.1	100.5	49.2	93.2	54.5
-10	-	-	145	42.1	134.2	48.7	127.7	52.6	120.2	57.4
-5	-	-	178	44.9	166.4	51.7	159.7	55.4	152.2	59.6

SRS-12S(R717)with ECO/带经济器										
Tc	20		30		40		45		50	
Te	Pf	Pa	Pf	Pa	Pf	Pa	Pf	Pa	Pf	Pa
-35	52.3	28.2	48.3	30.7	41.3	36.4	-	-	-	-
-30	67.7	29	63.8	32.6	56.6	38.7	51.5	43.9	45.3	52.9
-25	85.8	30.3	81.9	35	74.8	41.7	69.6	46.8	63.2	54.7
-20	106.6	32	102.9	37.7	95.9	44.9	90.8	50	84.4	57.2
-15	130.7	33.8	126.9	40.5	120.3	48.2	115.4	53.2	109.4	59.9
-10	-	-	154.2	43.1	148.2	51.2	143.8	56.1	138.3	62.1
-5	-	-	185.8	45.5	180.1	53.6	176.3	58.2	171.4	63.5

SRS-12M(R717)										
Tc	20		30		40		45		50	
Te	Pf	Pa	Pf	Pa	Pf	Pa	Pf	Pa	Pf	Pa
-35	51.4	28.7	45.7	30.5	37.5	34.9	32.4	39.5	-	-
-30	67.8	30	61.5	32.9	52.5	37.8	46.8	42.2	40.2	49.9
-25	87.5	31.9	80.5	35.8	70.7	41.5	64.5	45.8	57.3	52.6
-20	110.8	34.1	103.1	39.2	92.5	45.5	85.8	49.9	78.2	56.1
-15	138.4	36.5	129.6	42.7	118.3	49.6	111.3	54	103.3	59.8
-10	-	-	160.7	46.2	148.7	53.5	141.5	57.8	133.2	63
-5	-	-	197.2	49.3	184.4	56.8	177	60.9	168.7	65.5

SRS-12M(R717)with ECO/带经济器										
Tc	20		30		40		45		50	
Te	Pf	Pa	Pf	Pa	Pf	Pa	Pf	Pa	Pf	Pa
-35	58.4	31.3	53.9	34.1	46.1	40.3	40.7	46.4	-	-
-30	75.7	32.1	71.2	36.2	63.3	43	57.5	48.6	50.6	58.6
-25	95.9	33.6	91.6	38.9	83.6	46.4	77.7	51.9	70.7	60.7
-20	119.2	35.5	115	41.8	107.2	49.9	101.5	55.6	94.5	63.6
-15	146.2	37.5	141.8	44.9	134.6	53.6	129.2	59.3	122.4	66.7
-10	-	-	172.5	47.8	166	57	160.9	62.4	154.6	69
-5	-	-	208.1	50.4	202	59.7	197.5	64.7	191.8	70.6

SRS-12L (R717)										
Tc	20		30		40		45		50	
Te	Pf	Pa	Pf	Pa	Pf	Pa	Pf	Pa	Pf	Pa
-35	56.4	31.2	50.2	33.1	41.2	37.8	35.6	42.7	-	-
-30	74.4	32.6	67.5	35.7	57.6	41.1	51.3	45.7	44.2	53.9
-25	96	34.7	88.4	39	77.6	45.1	70.8	49.7	62.9	57
-20	121.7	37.1	113.1	42.6	101.5	49.4	94.2	54.2	85.8	60.9
-15	151.9	39.7	142.2	46.4	129.8	53.9	122.2	58.7	113.4	64.9
-10	-	-	176.4	50.2	163.2	58.1	155.3	62.8	146.2	68.5
-5	-	-	216.5	53.6	202.4	61.8	194.3	66.2	185.1	71.2

SRS-12L(R717)with ECO/带经济器										
Tc	20		30		40		45		50	
Te	Pf	Pa	Pf	Pa	Pf	Pa	Pf	Pa	Pf	Pa
-35	63.6	33.5	58.7	36.5	50.2	43	44.2	49.4	-	-
-30	82.3	34.4	77.6	38.8	68.8	45.9	62.6	52	55	62.2
-25	104.2	36.1	99.6	41.7	90.8	49.5	84.6	55.6	76.8	64.6
-20	129.7	38.2	125	44.9	116.4	53.5	110.4	59.6	102.7	68
-15	158.6	40.2	154	48.2	146.1	57.5	140.4	63.5	132.9	71.2
-10	-	-	187.4	51.4	180	61.1	174.6	66.8	167.9	74
-5	-	-	225.5	54.2	218.7	63.9	214.1	69.4	208.1	75.6

SRS (可带经济器), 制冷剂R717

SRS-14S (R717)										
Tc	20		30		40		45		50	
Te	Pf	Pa	Pf	Pa	Pf	Pa	Pf	Pa	Pf	Pa
-35	69.6	40.6	63.9	47.2	52.2	53.3	43.3	54.7	-	-
-30	92.7	42.2	85.4	49.8	72.5	57.1	62.8	59.4	50.7	59.3
-25	120.7	44.2	111	52.8	96.8	61.4	86.6	64.5	73.7	65.8
-20	154.5	46.2	141.3	56	125.7	65.9	115.2	69.9	101.9	72.3
-15	195.5	48	177.2	59	159.9	70.3	149.2	75.2	136.1	78.8
-10	-	-	220.2	61.7	200.6	74.5	190	80.2	177.4	84.9
-5	-	-	272.4	64	249.5	78.2	239.1	84.8	227.6	90.5

SRS-14S(R717)with ECO/带经济器										
Tc	20		30		40		45		50	
Te	Pf	Pa	Pf	Pa	Pf	Pa	Pf	Pa	Pf	Pa
-35	78.7	43.8	75	52.5	63.7	61	54.1	63.7	-	-
-30	102.9	44.9	98.4	54.5	86.9	64.3	76.9	67.9	63.3	68.8
-25	131.6	46.3	125.5	56.8	113.9	68.1	103.9	72.6	90.3	75.1
-20	165.2	47.7	156.8	59.3	145	71.8	135.4	77.3	122.4	81.2
-15	205.4	48.9	192.9	61.6	180.8	75.4	172	81.8	160	86.9
-10	-	-	235.3	63.6	222.2	78.6	214.7	85.9	204.8	92.3
-5	-	-	285.5	65.1	271.1	81.4	264.8	89.4	257.2	96.7

SRS-14M (R717)										
Tc	20		30		40		45		50	
Te	Pf	Pa	Pf	Pa	Pf	Pa	Pf	Pa	Pf	Pa
-35	76.8	44.3	70.5	51.6	57.5	58.1	47.7	59.6	-	-
-30	102.3	46.1	94.2	54.5	79.9	62.3	69.3	64.8	55.9	64.6
-25	133.1	48.3	122.5	57.8	106.8	67.1	95.5	70.5	81.3	71.8
-20	170.4	50.5	155.9	61.2	138.7	72	127	76.4	112.4	79
-15	215.7	52.5	195.5	64.5	176.4	76.9	164.6	82.2	150.1	86.1
-10	-	-	242.8	67.6	221.2	81.5	209.5	87.8	195.6	92.9
-5	-	-	300.4	70	275.1	85.6	263.7	92.9	251	99.1

SRS-14M(R717)with ECO/带经济器										
Tc	20		30		40		45		50	
Te	Pf	Pa	Pf	Pa	Pf	Pa	Pf	Pa	Pf	Pa
-35	87.1	48.1	83.1	57.7	70.6	66.9	59.8	69.8	-	-
-30	113.9	49.3	109.1	60	96.2	70.6	85.2	74.6	70.2	75.5
-25	145.7	50.9	139.1	62.6	126.1	74.8	115.2	79.9	100.1	82.6
-20	183.2	52.5	173.7	65.3	160.7	79.1	150.2	85.2	135.6	89.3
-15	227.5	53.8	213.9	67.8	200.4	83	190.7	90.1	177.5	95.8
-10	-	-	260.8	70	246.6	8				

性能参数

SRS (可带经济器), 制冷剂R717

SRS-16M (R717)										
Tc	20		30		40		45		50	
Te	Pf	Pa	Pf	Pa	Pf	Pa	Pf	Pa	Pf	Pa
-35	101.9	50.7	90.8	62.8	74.7	75.1	64.6	81.1	-	-
-30	134.5	54.7	122.1	67.1	104.3	79.5	93.1	85.4	80.2	90.8
-25	173.4	58.1	159.7	71.2	140.3	84.2	128.1	90.6	114	96.5
-20	219.6	61	204.3	75	183.4	89.2	170.4	96.3	155.4	103.3
-15	274.2	63.3	256.8	78.6	234.6	94.4	220.9	102.6	205.1	111
-10	-	-	318.4	82	294.7	100	280.5	109.6	264.3	119.7
-5	-	-	390.8	85.3	365.4	106.1	350.8	117.5	334.4	129.8

SRS-16M(R717)with ECO/带经济器										
Tc	20		30		40		45		50	
Te	Pf	Pa	Pf	Pa	Pf	Pa	Pf	Pa	Pf	Pa
-35	113.3	53.5	104.8	68	89.8	83.7	79.3	91.7	-	-
-30	146.6	56.8	138.1	71.5	122.7	87.1	111.9	94.9	98.5	102.3
-25	185.3	59.6	177.1	74.8	161.7	90.8	150.8	99	137	107
-20	230.1	61.8	222.1	77.6	207.1	94.6	196.3	103.5	182.9	112.7
-15	281.6	63.4	273.3	80.2	259.3	98.6	249.2	108.6	236.1	119.1
-10	-	-	332.2	82.7	318.7	102.9	309.8	114.3	297.4	126.2
-5	-	-	399.3	85.2	387.3	107.9	379	120.7	368.3	134.8

SRS-16L (R717)										
Tc	20		30		40		45		50	
Te	Pf	Pa	Pf	Pa	Pf	Pa	Pf	Pa	Pf	Pa
-35	113.3	55.4	101	68.5	83.1	81.6	71.8	71.8	-	-
-30	149.5	59.8	135.7	73.4	115.9	86.7	103.5	92.9	89.2	98.5
-25	192.9	63.7	177.6	77.9	156	92.1	142.4	98.9	126.8	105.2
-20	244.2	66.8	227.1	82.1	204	97.6	189.5	105.4	172.8	112.9
-15	304.9	69.4	285.5	86.1	260.8	103.4	245.6	112.4	228	121.5
-10	-	-	354	89.9	327.7	109.6	312	120.1	293.9	131.1
-5	-	-	434.6	93.5	406.3	116.4	390.1	128.8	371.9	142.2

SRS-16L(R717)with ECO/带经济器										
Tc	20		30		40		45		50	
Te	Pf	Pa	Pf	Pa	Pf	Pa	Pf	Pa	Pf	Pa
-35	127.3	59.3	117.8	75.4	100.9	92.5	89.2	101.1	-	-
-30	165	63.1	155.4	79.4	138.2	96.7	126	105.3	110.9	113.3
-25	208.7	66.1	199.4	83.1	182.2	101	169.7	110	154.4	118.9
-20	259.4	68.5	250.2	86.3	233.6	105.4	221.2	115.2	205.9	125.2
-15	317.7	70.2	308.3	89.1	292.6	109.9	281.1	121	266.2	132.5
-10	-	-	374.8	91.8	360.4	114.7	349.7	127.3	336.2	140.9
-5	-	-	451.7	94.4	437.9	120.1	428.1	134.3	416.6	150.4

图例

Pf=冷量 (KW) Pa=输入电功率 (KW)

Te=蒸发温度 (°C) Tc=冷凝温度 (°C)

50Hz 频率

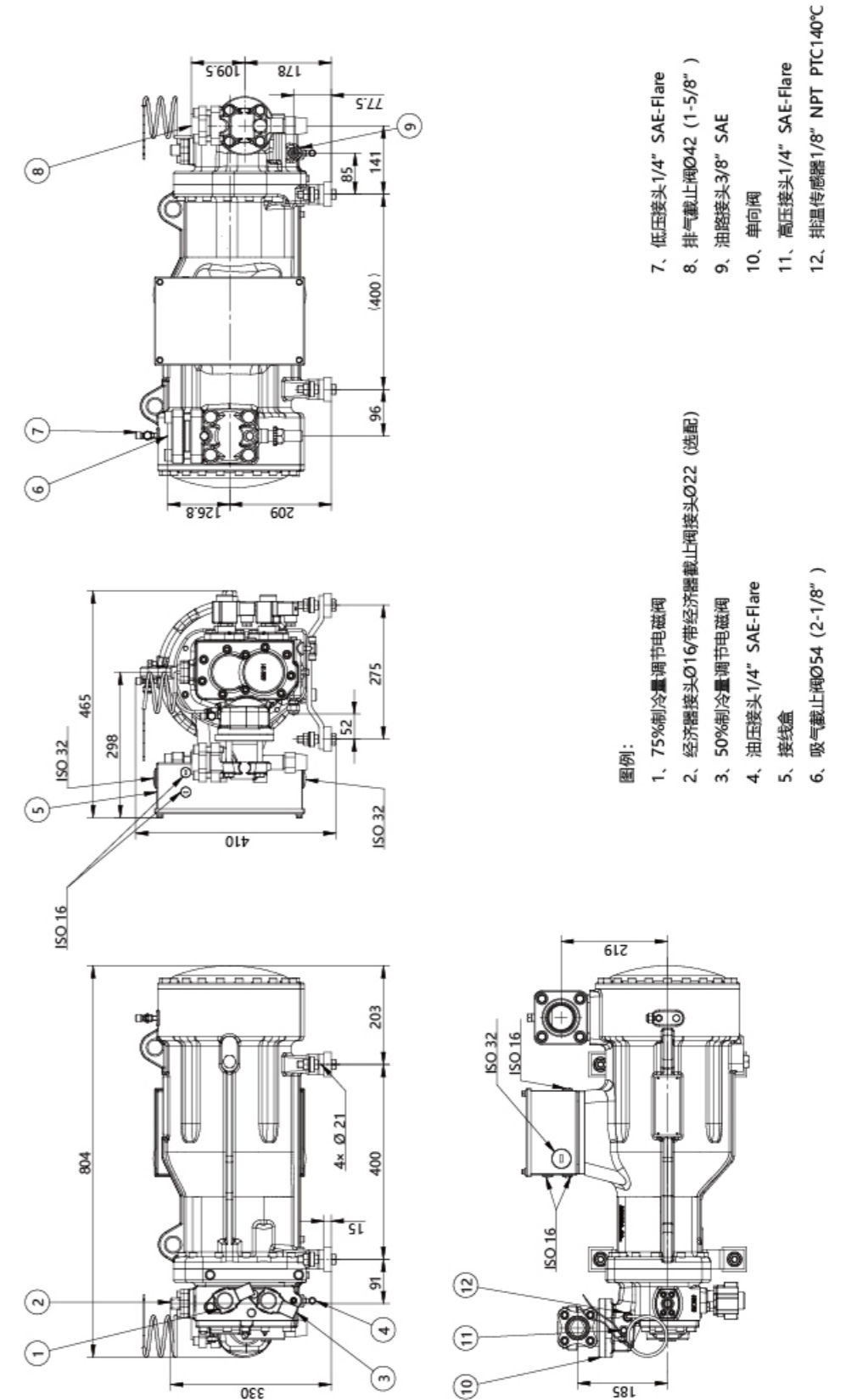
液体过冷度5°C

吸气过热度10°C

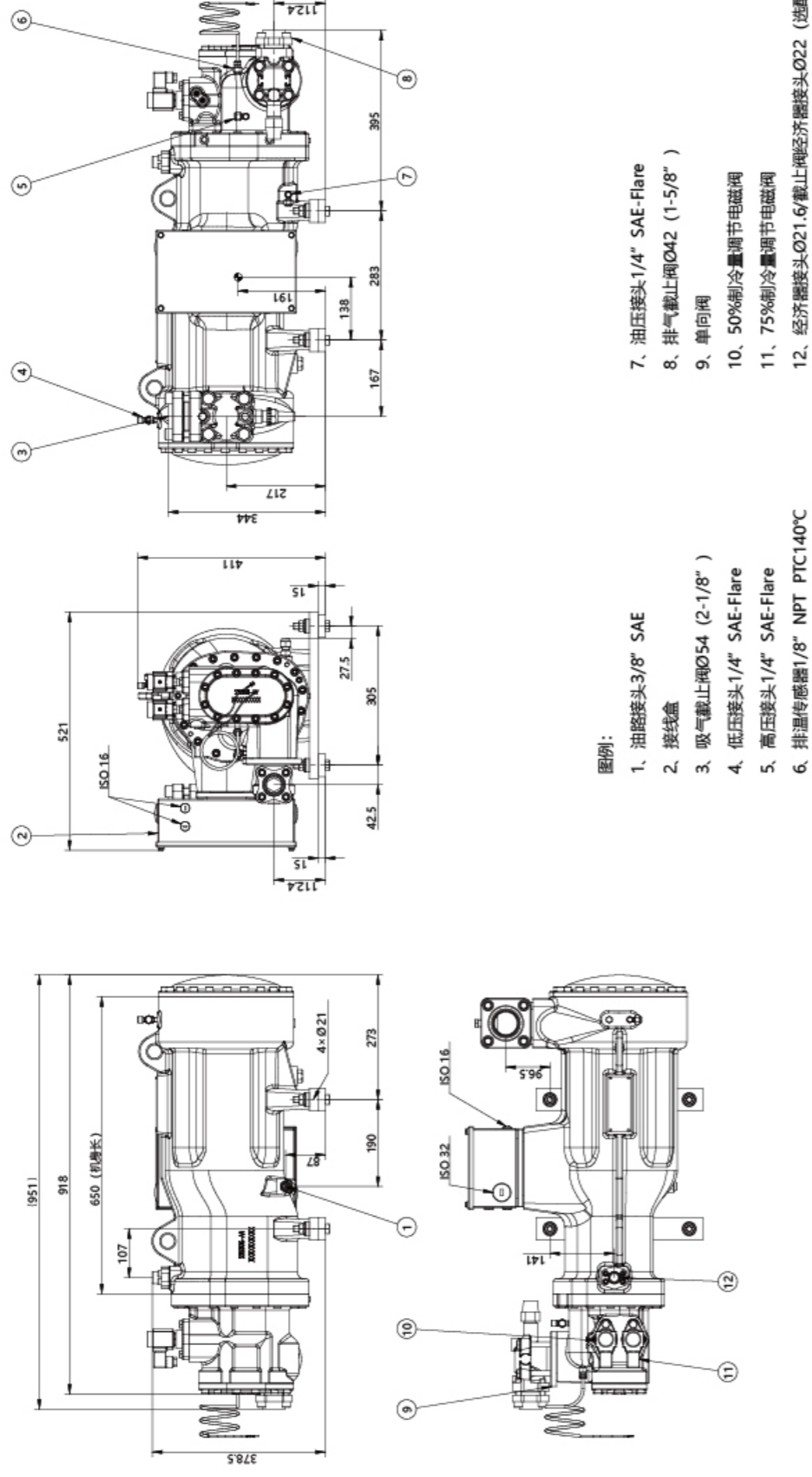
此工况范围内不需要油冷却

此工况范围内需要油冷却 (具体参看“应用范围”章节)

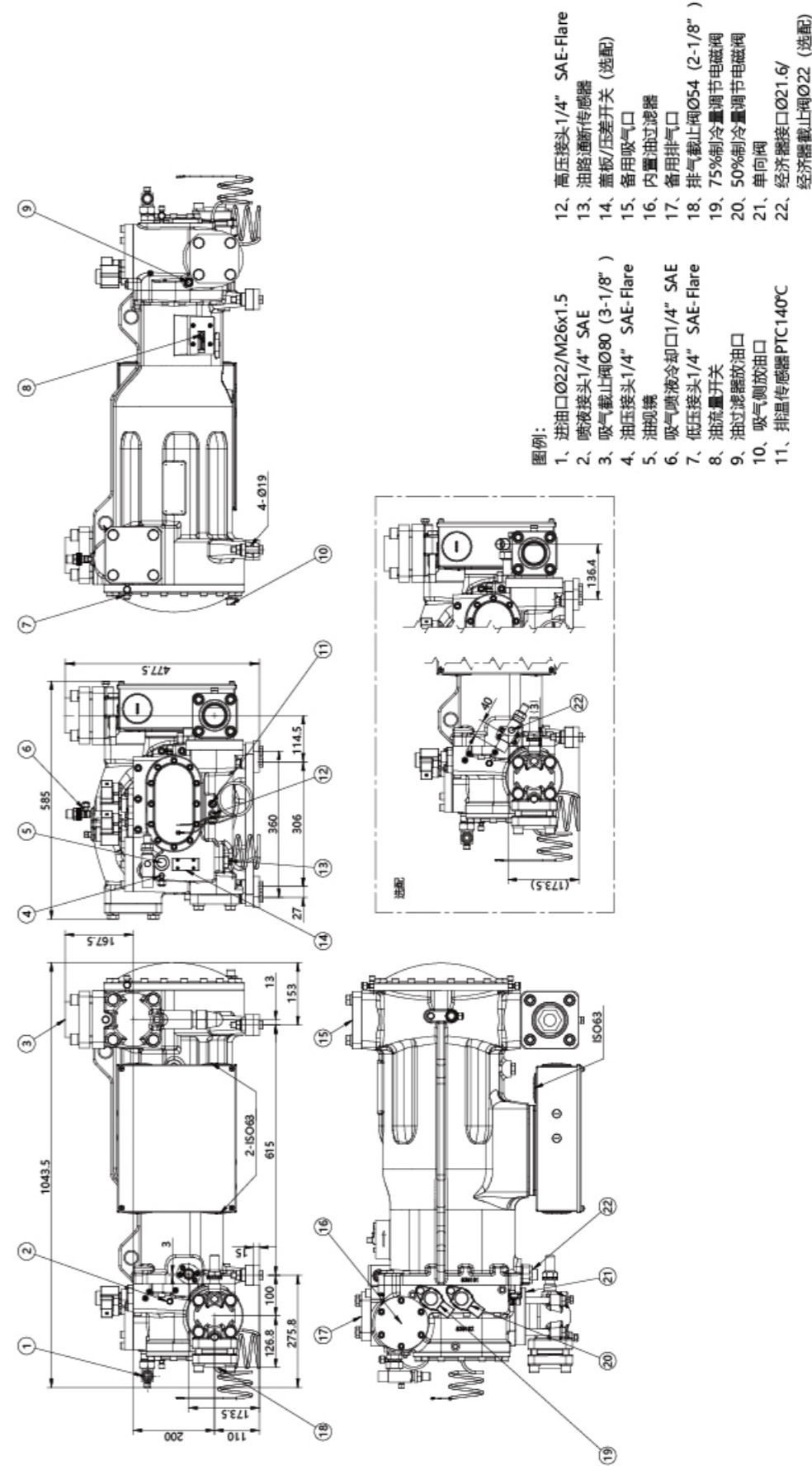
SRS-08S/M/L 氟用外形尺寸图



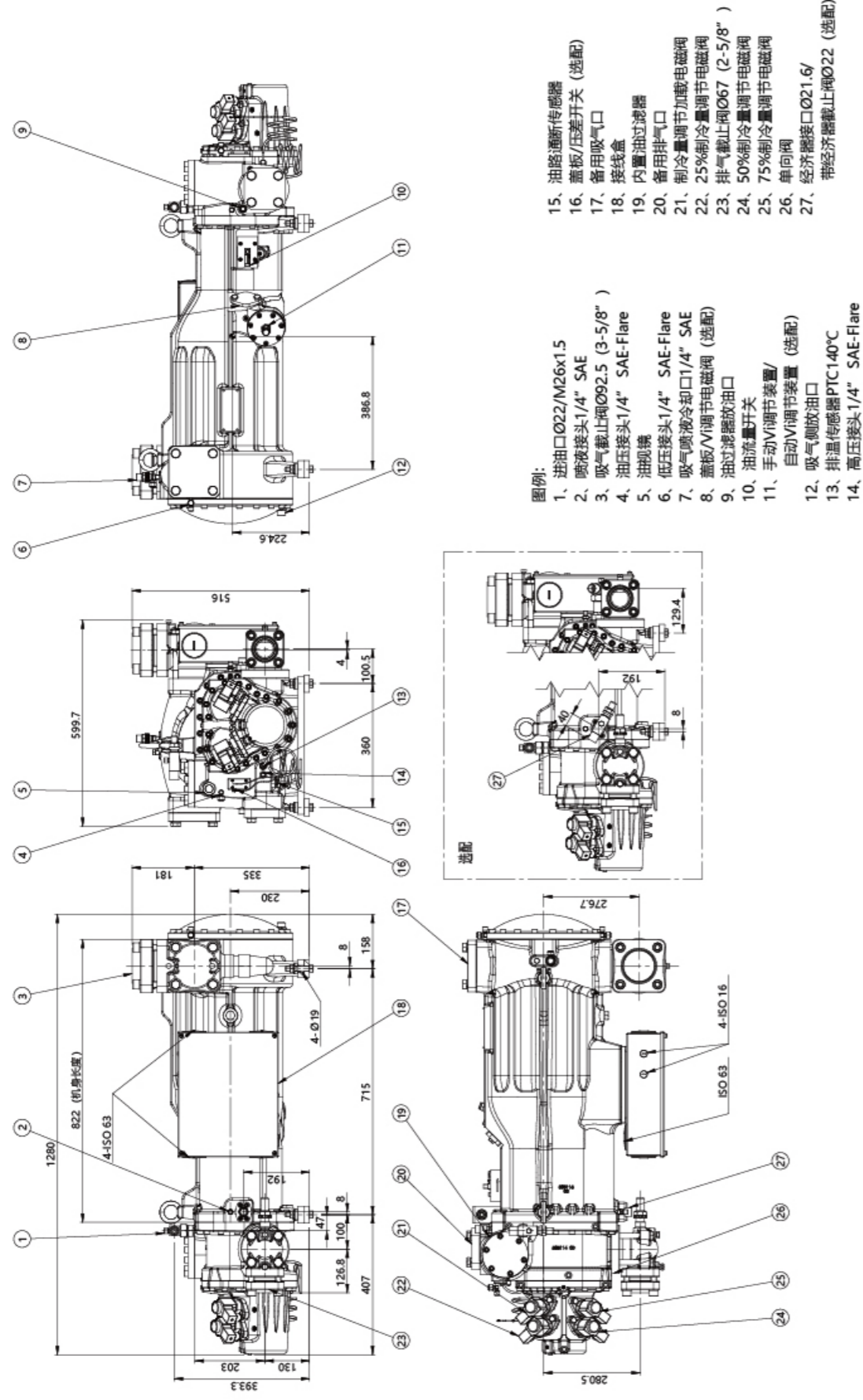
SRS-10S/L 氟用外形尺寸图



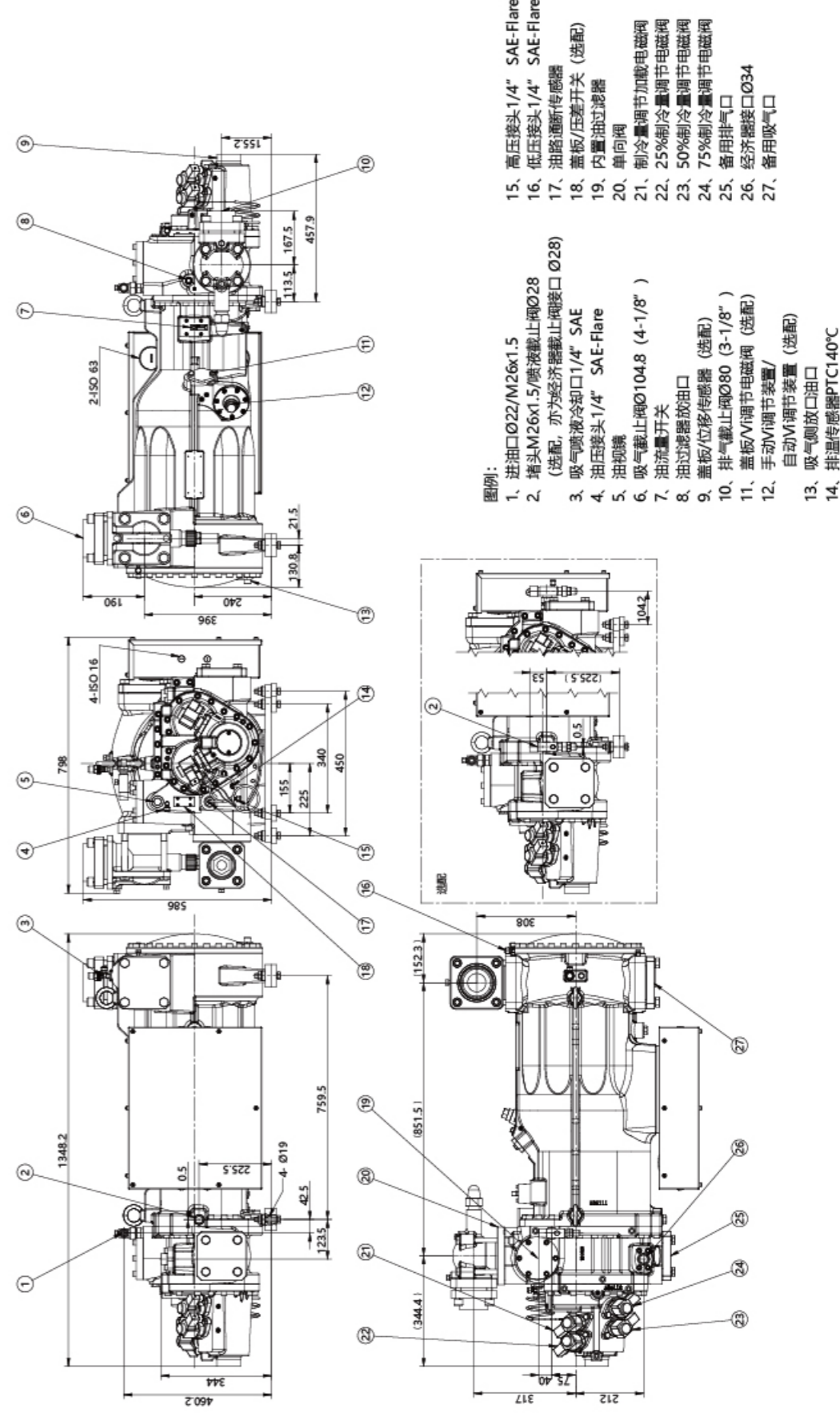
SRS-12S/M/L 氟用外形尺寸图



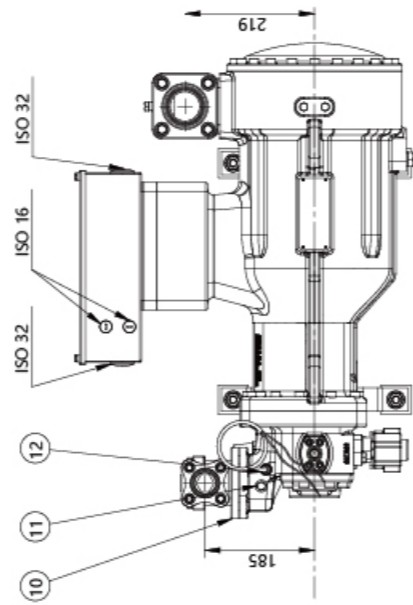
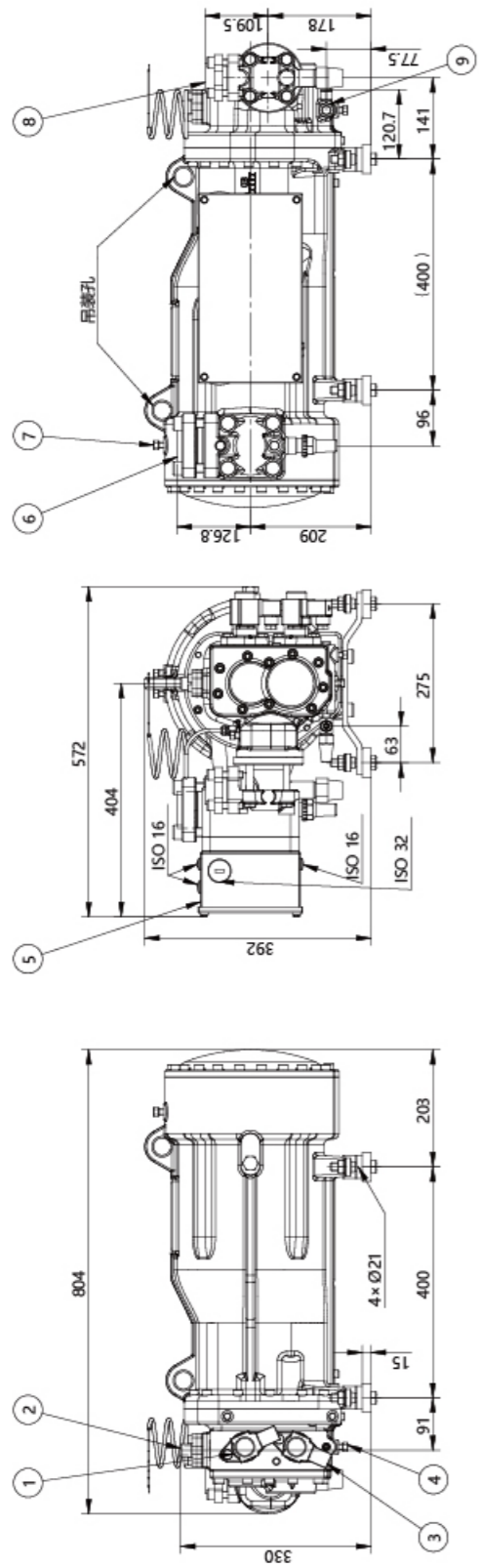
SRS-14S/M/L 氟用外形尺寸图



SRS-16S/M/L 氟用外形尺寸图



SRS-08S/M/L 氨用外形尺寸图

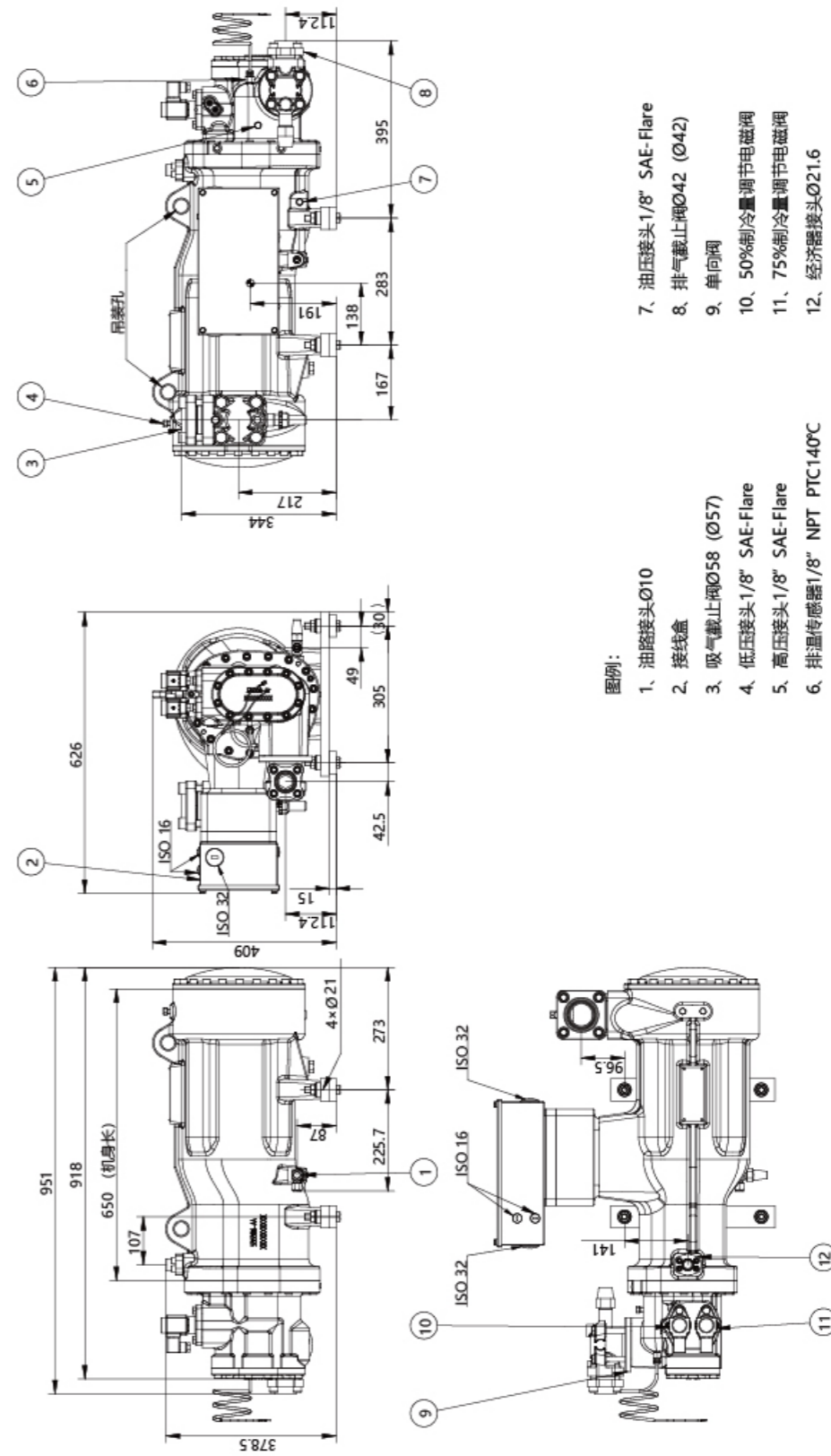


图例:

- 1、75%制冷量调节电磁阀
- 2、经济器接头Ø16
- 3、50%制冷量调节电磁阀
- 4、油压接头1/8" SAE-Flare
- 5、接线盒
- 6、吸气截止阀Ø58 (Ø57)

- 7、低压接头1/8" NPT
- 8、排气截止阀Ø42 (Ø42)
- 9、油路接头Ø10
- 10、单向阀
- 11、高压接头1/8" NPT
- 12、排温传感器1/8" NPT PTC140°C

SRS-10S/L 氨用外形尺寸图

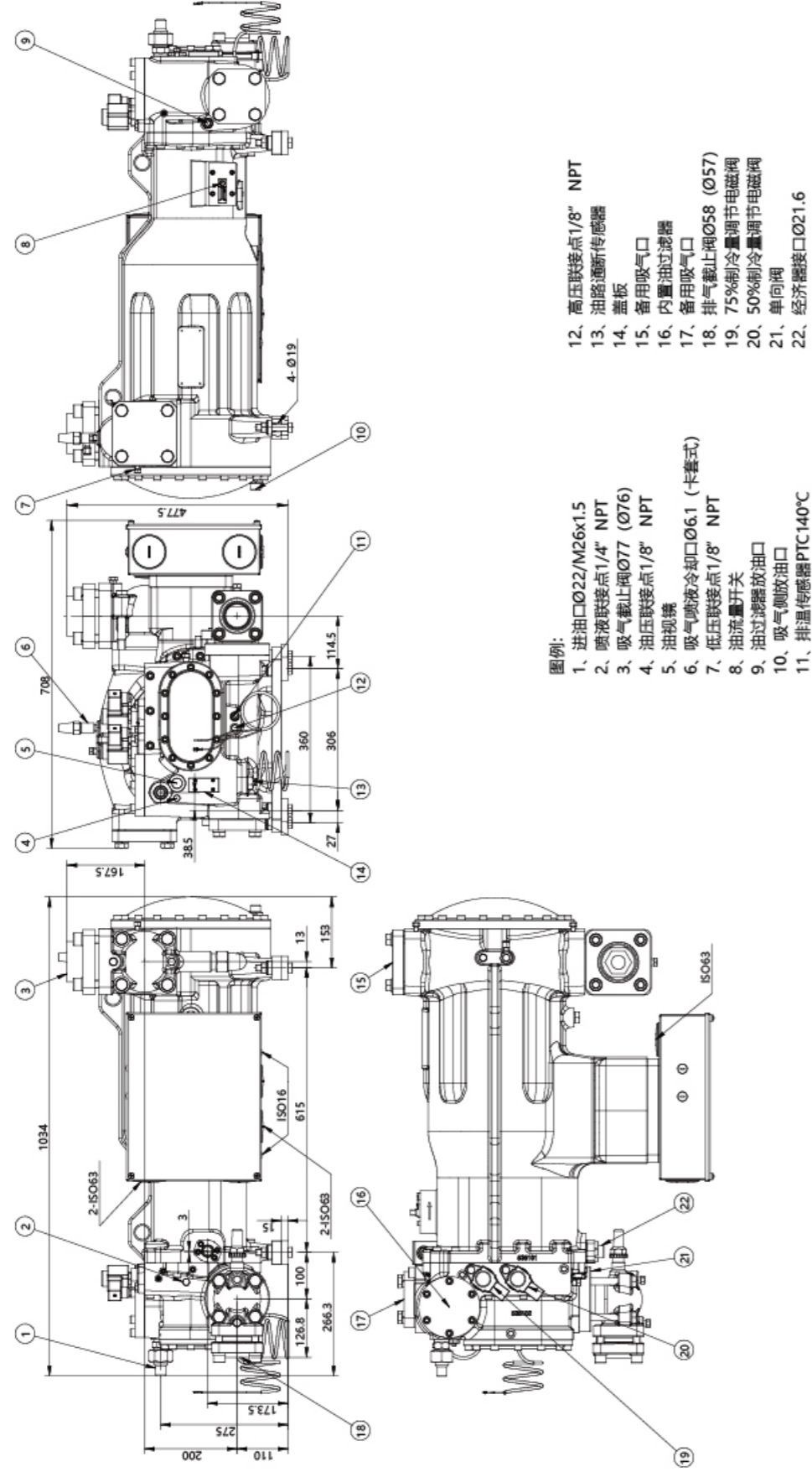


图例:

- 1、油路接头Ø10
- 2、接线盒
- 3、吸气截止阀Ø58 (Ø57)
- 4、低压接头1/8" SAE-Flare
- 5、高压接头1/8" SAE-Flare
- 6、排温传感器1/8" NPT PTC140°C

- 7、油压接头1/8" SAE-Flare
- 8、排气截止阀Ø42 (Ø42)
- 9、单向阀
- 10、50%制冷量调节电磁阀
- 11、75%制冷量调节电磁阀
- 12、经济器接头Ø21.6

SRS-12S/M/L 氨用外形尺寸图



SRS-14S/M/L 氨用外形尺寸图

